

***E. coli* RuvC Protein, functional**

Cat.# 01-011, Size: 20 ug; Cat.#01-012, Size: 100 ug

Background:

E. coli RuvC protein (19 kDa) is a structurally specific endonuclease which binds specifically to the Holliday structure, an intermediate of recombination, at the late stage of homologous recombination and recombination repair and introduces a nick in the symmetrical point of the Holliday junction cleaving and resolving the recombinant (1, 2).

Specifications:

Product: Recombinant *E. coli* full-size RuvC protein without tag.

Form: 50% glycerol, 10 mM Tris-HCl (pH7.5), 2 mM EDTA, 100 mM NaCl, 5 mM mercaptoethanol

Concentration: 1.0 mg/ml (determined by BCA method)

Storage: Sent at 4°C or at -20°C and store at -20°C or -80°C for longer period.

Applications:

- 1) Functional studies in vitro. RuvC cleaves recombination intermediate at Holliday Junction.
- 2) Standard antigen for western blotting and ELISA.
- 3) SDS-PAGE

Data Link UniProtKB/Swiss-Prot [P0A814](#) (RUVC_ECOLI)

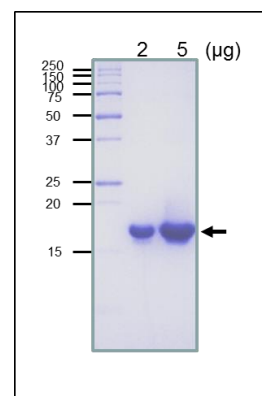


Figure. SDS-PAGE analysis of the purified RuvC protein. 19 kDa

References: This product was used in Ref. 2 and 3.

1. Shinagawa H and Iwasaki H (1996) "Processing the holliday junction in homologous recombination." *Trend Biochem Sci* **21**:107-111 PMID: [8882584](#)
2. Iwasaki H *et al* (1991) "Escherichia coli RuvC protein is an endonuclease that resolves the Holliday structure." *EMBO J* **10**:4381-4389 (1991) PMID: [1661673](#)
3. Murayama Y *et al* (2008) "Formation and branch migration of Holliday junctions mediated by eukaryotic recombinases." *Nature* **451**:1018-1021 PMID: [18256600](#)

Related Products:

01-007 *E.coli* RuvA protein 01-009 *E.coli* RuvB protein 61-005 anti-RuvA antibody
61-007 anti-RuvB antibody 61-009 anti-RuvC antibody