

Anti-RecA antibody

Immunized Animal: Rabbit

Polyclonal antiserum

Cat. #61-003 (50 µl); #61-004 (250 µl)

Description

E. coli RecA protein (352 AA, 38 kD) plays critically important roles in homologous recombination, recombination repair and regulation of cellular responses to DNA damage (SOS response). RecA promotes auto-cleavage of LexA repressor by its co-protease activity after DNA damage, and induces many proteins related to DNA repair, including RecA itself (1).

Applications

1. Western blot (1/3,000 dilution)
2. Immunoprecipitation (1/600 dilution)
3. Indirect immuno-fluorescent staining (assay dependent)
4. ELISA (assay dependent)

Specification

Immunogen: Highly purified full-length recombinant *E. coli* RecA protein

Purity: The anti-serum was first adsorbed with extract of *recA* deletion strain and affinity-purified with purified RecA protein conjugated with agarose beads.

Form: Antibody solution at 1.0 mg/ml in PBS with 50% glycerol, filter-sterilized

Storage: Ship at 4°C or -20°C, and upon arrival, briefly centrifuge and store at -20°C.

Data Link UniProtKB/Swiss-Prot [P0A7G6](#) (RECA_ECOLI)

References

1. Friedberg EC *et al.* DNA Repair and Mutagenesis 2nd Ed. ASM Press

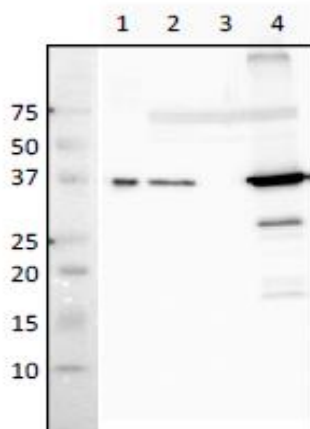


Fig 1. Western blot analysis of RecA protein in crude extract of *E. coli*. Lane 1, Purified RecA 8 ng. Lane 2, Wild type. Lane 3, $\Delta recA$ mutant. Lane 4, $\Delta lexA$ mutant (SOS genes overexpressed). Antibody used at 1/3,000 dilution. Cell extracts, 2 µg

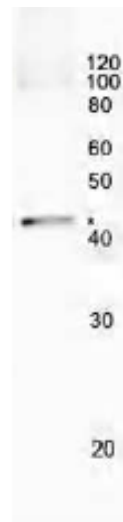


Fig 2. Immunoprecipitation of RecA protein from crude extract of *E. coli* cells. Antibody 2 µg was adsorbed to proteinA magnetic beads to precipitate RecA protein from supernatant of sonic disrupted *E. coli* cells. The precipitate was analyzed by Western blot.

Distributed by AS ONE International, Inc.

Tel: 408-638-7415

www.asone-int.com

info@asone-int.com