

## Anti-Srb4 (*S. cerevisiae*) antibody, rabbit polyclonal, ChIP grade

Cat. # 62-007, Size: 100 ul

### Background:

Srb4 protein is subunit of the RNA polymerase II mediator complex; associates with core polymerase subunits to form the RNA polymerase II holoenzyme; required for basal RNA polymerase II transcription; homozygosity of the human MED17 L371P mutation is associated with infantile cerebral and cerebellar atrophy with poor myelination

### Specifications:

**Reactivity:** *S. cerevisiae* Srb4 protein.

**Immunogen:** Recombinant full-size yeast His-tagged Srb4 protein (1-687 aa)

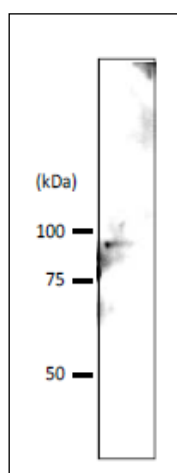
**Form:** Whole antiserum added with 0.1% sodium azide.

**Storage:** Ship at 4°C and store at -20°C.

### Applications:

- Western blotting (1/1,000~1/5,000 dilution)
- Immunoprecipitation (assay dependent)
- Chromatin Immunoprecipitation (assay dependent)

**Data Link:** [SGD SRB4/YER022W](#) *S. cerevisiae* Srb4 protein [SwissProt: P32569](#) *S. cerevisiae* [Entrez](#)  
[Gene: 856743](#) *Saccharomyces cerevisiae*



**Fig.1. Detection of Srb4p in crude extract of *S. cerevisiae* by Western blotting**

Extract of *S. cerevisiae* strain BY4741 (10 µg) was used. Tahe antibody was used at 1/1,000 dilution. IMMUNO SHOT (CosmoBio, Tokyo) was used as signal enhancer.

Molecular mass of Srb4 protein is 78.5 kDa.