

Anti-Rpn5 (*S.cerevisiae*) antibody, affinity purified

62-203 100 ul

The 26 S proteasome is a protein complex with a molecular mass of 2000 kDa. It is essential not only for eliminating damaged or misfolded proteins but also for degrading short lived regulatory proteins involved in cell cycle regulation, DNA repair, signal transduction, apoptosis, and metabolic regulation (1). Rpn5p is essential, non-ATPase regulatory subunit of the 26S proteasome lid, similar to mammalian p55 subunit and to another *S. cerevisiae* regulatory subunit, Rpn7 (2, 3). It consists of 445 amino acids with molecular weight of 51,768.

Applications

- 1) Western blotting (~1000 fold dilution)
- 2) Immunoprecipitation

Not tested for other applications

Specifications

Product: Rabbit polyclonal antibody affinity purified with recombinant Rpn5p

Antigen: Recombinant yeast Rpn5p expressed in *E. coli*

Form: 100 mM NaCl, 10 mM Tris-HCl, pH 7.4, 0.05 % sodium azide

Reaction: *S. cerevisiae* Rpn5p. Not tested with other species

Storage: -20°C. To avoid repeated freezing and thawing, store the antibody in aliquots.

Data Link SGD RPN5/YDL147W

Reference (This product was used in ref. 3)

1. Hershko A and Ciechanover A "THE UBIQUITIN SYSTEM" Annu Rev Biochem 67: 425-479 (1998) PMID: 9759494
2. Finley D et al "Unified nomenclature for subunits of the *Saccharomyces cerevisiae* proteasome regulatory particle" Trends Biochem Sci 23: 244-245 (1998) PMID 9697412
3. Isono E et al "The assembly pathway of the 19S regulatory particle of the yeast 26S proteasome" Mol Biol Cell 18: 569-576 (2007) PMID: 17135287

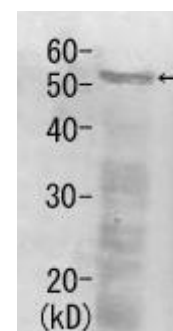


Fig.1. Detection of Rpn5 (52kDa) in the crude extract of *S. cerevisiae* by western blot using this antibody.

Distributed by AS ONE International, Inc.

Tel: 408-638-7415

www.asone-int.com

info@asone-int.com