

## **Anti-Cnd2 (*S. pombe*) antibody, rabbit serum**

# 63-105      100 µl

Cnd2 protein is a regulatory subunit of the condensin complex, which is required for conversion of interphase chromatin into mitotic condensed chromosomes in *S. pombe*. The condensin complex also plays a role during interphase in processes of DNA repair and recombination.

Although molecular mass of the Cdn2 protein of *S. pombe* from the DNA sequence is 83.2 kDa, it migrates on SDS-PAGE at a position equivalent to a 105 kDa protein (Ref. 2).

### **Application**

Western blot (1:500 dilution) (Ref.1,2,3)

Immunofluorescent staining (Ref. 3)

Not tested for other applications

### **Specification**

Immunogen: Recombinant GST-Cnd2 fusion protein expressed in *E. coli*

Specificity: Reacts with *S. pombe* Cnd2 protein. Not tested for other species

Form: Rabbit antiserum with 0.05 % sodium azide

Storage: Ship 4°C and long term storage -20°C

### **Data Link**

[cnd2: pombe : GeneDB](#)

**References:** This antibody was used in the following references.

1. Chen ES, Sutani T, Yanagida M. Chen ES, Sutani T, Yanagida M. (2004) Cti1/C1D interacts with condensin SMC hinge and supports the DNA repair function of condensin. Proc Natl Acad Sci U S A. 101:8078-83. [PNAS Content](#)
2. Aono N, Sutani T, Tomonaga T, Mochida S, Yanagida M. (2002) Cnd2 has dual roles in mitotic condensation and interphase. Nature. 417:197-202. [pubmed/12000964](#)
3. Morishita J.(2001) Bir1/Cut17 moving from chromosome to spindle upon the loss of cohesion is required for condensation, spindle elongation and repair. Genes Cells. 6:743-63. [Genes to Cells - Wiley Online Library](#)

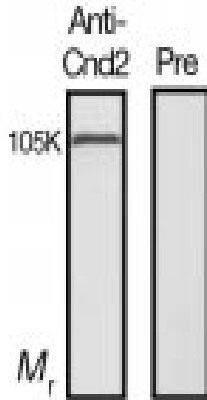


Fig. 1. Identification of Cnd2 protein in the crude extract of *S. pombe* by western blot with this antiserum.

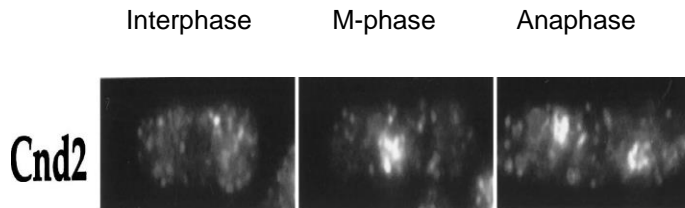


Fig.2 Detection of Cnd2 protein by immunofluorescent staining of *S. pombe* cell.

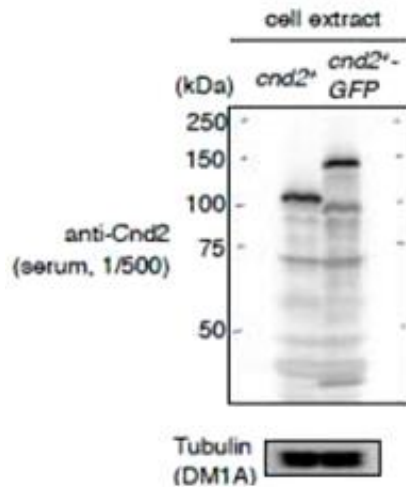


Fig.3 Identification of Cnd2 protein and Cnd2-GFP protein in crude cell extract by anti-Cnd2 antibody at 1/500 dilution.