

Anti-Mrc1 (*S. pombe*) antibody, rabbit antiserum

Catalog # 63-151 50 µl

Mrc1, Mediator of replication checkpoint 1, is as S-phase checkpoint protein of *Schizosaccharomyces pombe* found at replication forks. It is required for phosphorylation and activation of Cds1 during DNA replication stress. It forms a replication pausing complex and is phosphorylated by Rad3 and Tel1 kinases. The phosphorylated form of Mrc1 is detected by a change in the electrophoretic mobility.

Applications

Western blot 1:5,000 dilution

Immunoprecipitation

Specification

Immunogen: Purified recombinant protein containing amino acids 1~317 of Mrc1

Form: Undiluted rabbit antiserum added with 0.05 % sodium azide

Storage: Ship at 4°C and store at -20°C

Data Link Swiss-Prot [Q9P7T4](#)

Reference (described and used in reference 1)

1. Zhao H *et al* "Replication checkpoint protein Mrc1 is regulated by Rad3 and Tel1 in fission yeast."

Mol Cell Biol **23**: 8395-8403 (2003) PMID: [14585996](#)

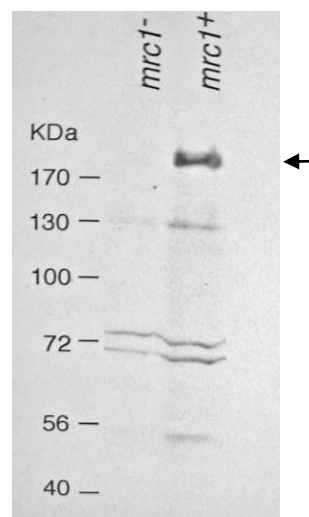


Fig. 1 Western blot analysis of Mrc1 in whole cell extracts.

Lane 1: *mrc1*⁻ strain. Lane 2: Wild type strain.