

## Anti- $\beta$ tubulin (*S. pombe*) antibody, affinity purified (rabbit polyclonal)

# 63-160      100  $\mu$ g

Tubulin is the major constituent of microtubules. There are three members ( $\alpha$ ,  $\beta$ ,  $\gamma$ ) and two subtypes ( $\delta$ ,  $\epsilon$ ) in the tubulin family. Of these members, beta tubulin (449 aa, 51 kDa) is found at microtubule organizing centers (MTOC) such as the spindle poles or the centrosome, suggesting that it is involved in the minus-end nucleation of microtubule assembly during cell cycle.

### Applications

- 1) Western blot (1,000 fold dilution)
- 2) Immunofluorescent staining (assay dependent)

### Specification

Reactivity: Reacts specifically with  $\beta$ -tubulin of *Schizosaccharomyces pombe*. Not tested with other species.

Immunogen: *S. pombe*  $\beta$ -tubulin C-terminal peptide, C-YEIEEEEKEPLEY-OH

Purification: Affinity purified with the immunogen peptide

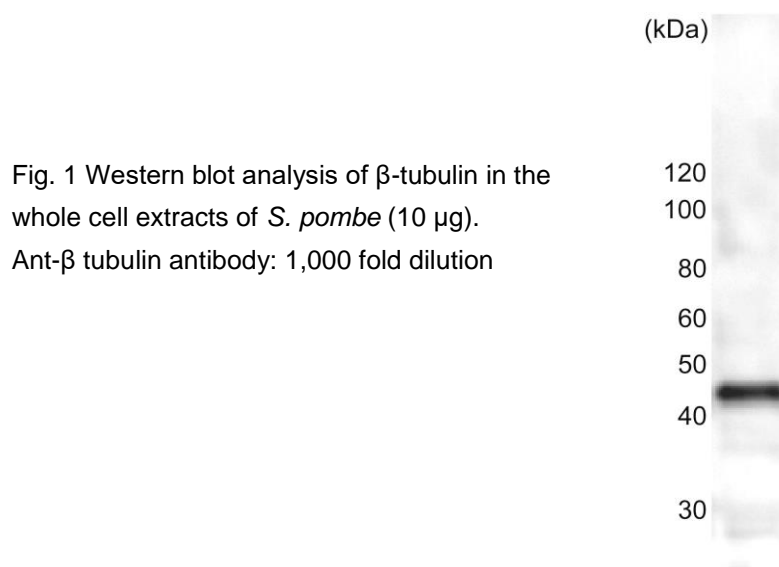
Form: 1 mg/ml in PBS, 50% glycerol. Filter-sterilized

Storage: Shipped at 4°C. Upon arrival aliquot and store at -20°C.

**Data Link:** UniProtKB/Swiss-Prot [P05219](#) (TBB\_SCHPO)

**Reference:** This antibody was made by Dr. H. Masuda and used in the following reference.

Fedyanina, O.S., et al "Tubulin heterodimers remain functional for one cell cycle after the inactivation of tubulin-folding cofactor D in fission yeast cells." *Yeast* 26: 235-247(2009) [DOI:10.1002/yea.1663](#) (WB)



Distributed by AS ONE International, Inc.