

Anti-E. coli LT toxin antibody, rabbit antiserum

Cat. # 64-020 100µl

Description

Heat labile enterotoxin (LT) is produced by Enterotoxigenic E. coli and is similar to cholera toxin (CT). The identity of the amino acid sequences of LT and CT is about 80% and both toxins consist of one subunit A and five subunit B. LT continuously activates adenylate cyclase and elevated level of cAMP inhibits absorption of Na⁺ by intestinal villi cells, and stimulates secretion of Cl⁻ by villi and crypt cells, thus causing diarrhea. It works as a potent mucosal adjuvant and is considered to be used as adjuvant with vaccines. Subunit A possesses signal peptide of the amino acids 1-18, and the mature form consists of 19-258 amino acids. Subunit B has signal peptide of 1-21, and the mature form consists of 22-124 amino acids.

Applications

1) Western blot (2,000~10,000 time dilution) (figure 1)

2) Immunoprecipitation

Other applications have not been tested.

Specification

Immunogen: Initial immunization with LT toxoid and booster with LT toxin.

Reactivity: E. coli LT and cholera toxin.

Form: Rabbit antiserum with 0.09% sodium azide.

Storage: Ship at 4°C. Upon arrival, centrifuge, aliquot and store at -20°C

Data Link UniProtKB/Swiss-Prot [P06717](#) E. coli LT-A
UniProtKB/Swiss-Prot [P32890](#) E. coli LT-B

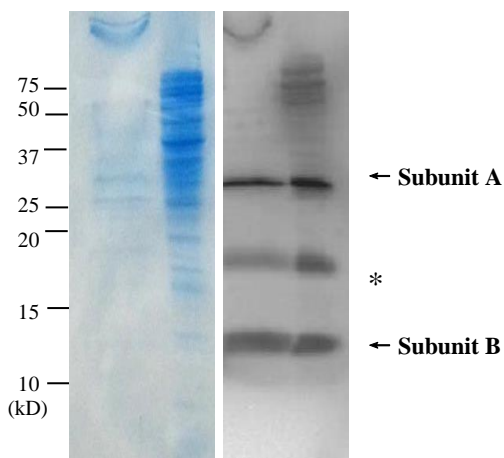


Fig. 1. Detection LT in culture medium and crude extract of ETEC cells by Western blot, using anti-LT antibody

Samples

1. SDS-PAGE of the culture medium of ETEC, CBB stained.
2. SDS-PAGE of the crude extract of ETEC cells, CBB stained.
3. Western blot of the culture medium
4. Westerns blot of crude extract of ETEC cells.

* Indicates a non-specific protein band.

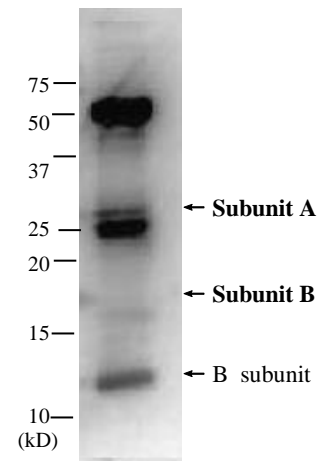


Fig. 2 Immunoprecipitation of LT from culture medium of ETEC by using anti-LT antibody.

H chain and L chain indicate heavy chain and light chain of IgG, respectively.

Distributed by AS ONE International, Inc.

Tel: 408-638-7415

www.asone-int.com

info@asone-int.com