

Anti-gamma tubulin antibody, affinity purified (rabbit)

Cat. # 69-001, Size:100 μ g

Background:

Tubulin is the major constituent of microtubules. There are three members (α , β , γ) and two subtypes (δ , ϵ) in the tubulin family. Of these members, Gamma tubulin (451aa, 51KDa) is found at microtubule organizing centers (MTOC) such as the spindle poles or the centrosome, suggesting that it is involved in the minus-end nucleation of microtubule assembly during cell cycle.

Specifications:

Reactivity: Reacts with gamma-tubulin of *Xenopus*, human and rodents

Immunogen: *Xenopus* gamma-tubulin C-terminal peptide, C-EYHAATRPDYISWGTQDK conjugated with KLH

Purification: Affinity-purified with the immunogen peptide conjugated with agarose.

Form: 1mg/ml in PBS, 50% glycerol, filter-sterilized

Storage: Shipped at 4°C and store at -20°C.

Applications:

- Western blotting (200~1,000 fold dilution)
- Immunofluorescent staining (1/100~1/200 dilution)

Data Link UniProtKB/Swiss-Prot [P23330](#) (TBG1_XENLA)

References: This product is described and used in the following reference.

1. Masuda H *et al* Role of γ -tubulin in mitosis-specific microtubule nucleation from the *Schizosaccharomyces pombe* spindle pole body *J. Cell Sci.* 109: 165-177(2000) PMID: [8834801](#) (WB)
2. Takeda S. *et al.* Identification of Ribonucleotide Reductase Protein R1 as an Activator of Microtubule Nucleation in *Xenopus*. *Mol Biol Cell* 11: 4173-4187 (2000) PMID: [11102516](#) (IF)

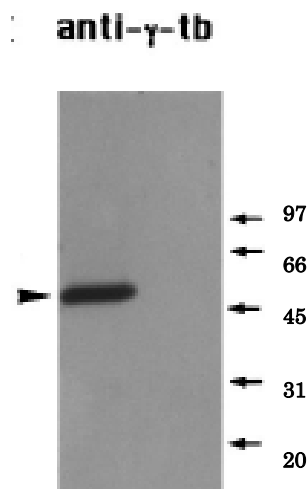


Fig. 1. Identification of endogenous γ -tubulin in a *Xenopus* mitotic extract by western blot

The primary antibody was used at 1/1,000 dilution

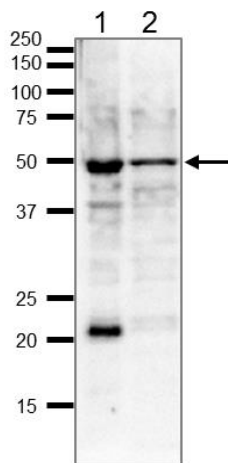


Fig.2 Identification of endogeneous γ -tubulin in whole cell extracts by western blot.

Samples (20 μ g) ; 1. HeLa cells 2. MCF7 cells

Blotting was done with wet system overnight at 15 v

The antibody was used at 1/1,000 dilution



Fig.3 Immunofluorescent staining of γ -tubulin accumulated at sperm centriole in demembrated *Xenopus* sperm heads which have been incubated in a *Xenopus* egg mitotic extract containing nocodazole. γ -Tubulin is stained red and sperm chromatin is stained with DAPI (blue). Anti- γ tubulin (*Xenopus*) was used at 1/100 dilution.

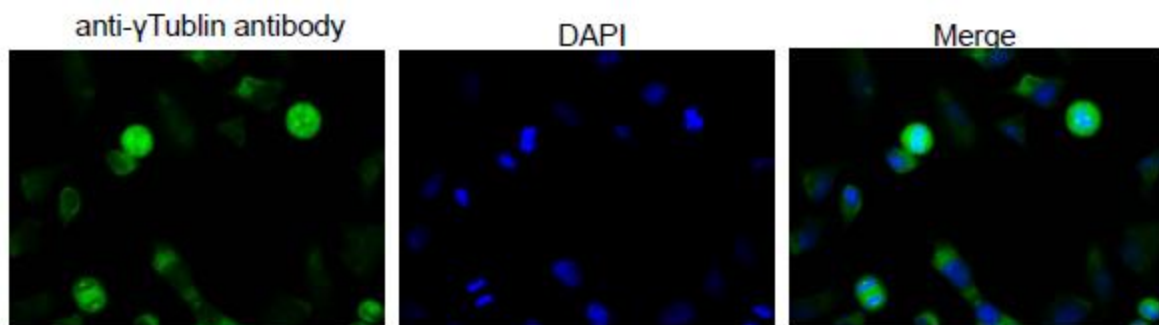


Fig.4 Immunofluorescence staining of γ -tubulin in Hela cells by using this anti- γ -tubulin antibody. The first antibody was used at 1/100 dilution. As second antibody goat anti-rabbit IgG conjugated with Alexa Fluor 488 was used at 1/1,000 dilution.