

Anti-Rad6 (human) antibody, affinity purified (rabbit polyclonal)

70-020 100 µg

Resuming of DNA synthesis, which was halted by various physical and chemical factors, was triggered by repair system including Rad6. Rad6 (152 aa, 17.3kDa) is the ubiquitin-conjugated enzyme E2A, and complex with two Rad18 molecules, ubiquitin ligase E3, to ubiquitinate PCNA by utilizing poly-ubiquitin chain that HLTF-UBC13 synthesized in translesion DNA synthesis (TLS) and template switch (TS). Two isoforms of Rad6, Rad6A and Rad6B differs in only 6 amino acids. It also plays an important role in epigenetic transcriptional regulation by catalyzing the monoubiquitination of histone H2B at Lys-120.

Applications

- 1) Western blot (1,000~2,000 fold dilution)
- 2) Immunofluorescent staining (assay dependent)
- 3) Immunoprecipitation (assay dependent)

Specification

Reactivity: Reacts with Rad6A and Rad6B of human, mouse, rat and hamster.

Immunogen: Human Rad6B full-length recombinant protein

Purity: Affinity purified with the full-length human Rad6A protein

Form: 1 mg/ml in PBS, 50% glycerol, filter-sterilized. Sodium azide and carrier-free.

Storage: Ship at 4°C. Upon arrival centrifuge, aliquot and store at -20°C.

Data Link: UniProtKB/Swiss [P49459](#) (UBE2A/Rad6A_HUMAN)

UniProtKB/Swiss [P63146](#) (UBE2B/Rad6B_HUMAN)

Reference: This product was used in the following reference.

Masuyama S. et al. "Regulated expression and dynamic changes in subnuclear localization of mammalian Rad18 under normal and genotoxic conditions" *Genes to Cells* 10: 753-762 (2005) PubMed [16098139](#)

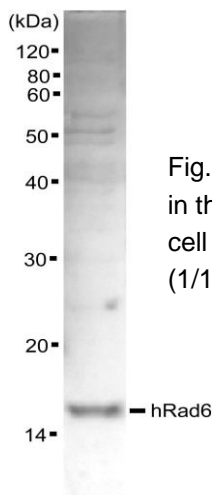


Fig. 1 Western blot analysis of Rad6 in the whole cell extracts of HeLa cell (10 µg) with anti-Rad6 antibody (1/1,000 dilution)

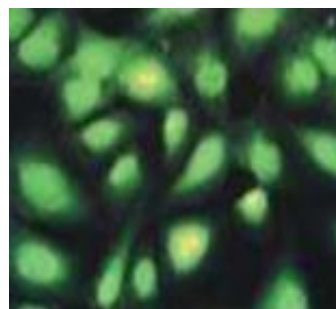


Fig. 2 Rad6 protein in GM637 cells were stained by indirect immunostaining with the Rad6 antibody

Distributed by AS ONE International, Inc.