

## Anti-Centrin 1 antibody, affinity purified (rabbit polyclonal)

Cat.#70-110, Size;100 µg

### Background:

Centrin 1 (human; 172 aa, MW; 19,570) plays a fundamental role in microtubule organizing center structure and function. Centrins, also known as caltractins, are a family present in the centrioles and pericentriolar lattice. Human centrin genes are CETN1, CETN2 and CETN3. Centrins are required for duplication of centrioles. They may also play a role in severing of microtubules by causing calcium-mediated contraction.

### Specifications:

**Immunogen:** Synthetic peptide conjugated to KLH, with a Cysteine residue linker corresponding to C terminal amino acids 155-168 (C-GEVNEEEFLRIMKK) of Human centrin-1

**Purity:** Affinity-purified with the immunogen peptide

**Form:** 1mg/ml in PBS, 50% glycerol. Filter-sterilized. Azide and carrier free.

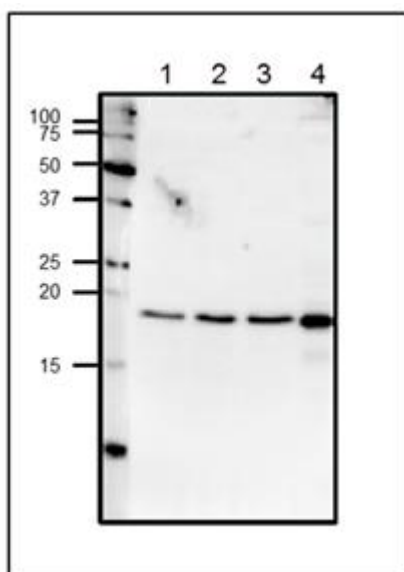
**Reactivity:** Reacts with human, mouse, rat, hamster and xenopus

**Storage:** Shipped at 4°C and store at -20°C

### Applications

- Western blotting (~ 1/1,000 dilution)
- Immunofluorescent staining (1/100~1/1,000 dilution)

**Database Link:** UniProtKB [Q12798](#) (CETN1\_HUMAN). GeneCard [CETN1](#).

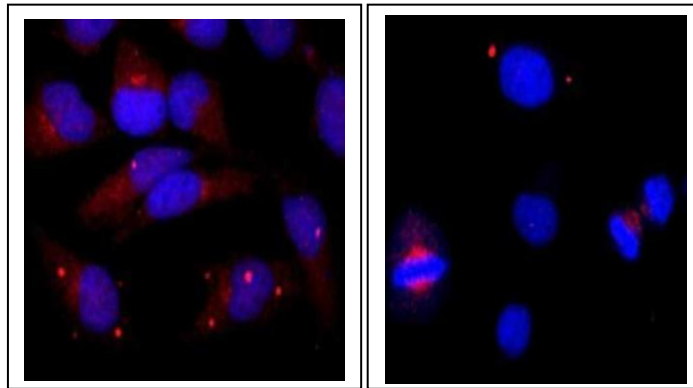


**Fig.1 Western blot analysis of endogenous centrin-1 in crude lysates.**

1. HeLa cells (20 µg)
2. MCF7 cells (20 µg)
3. NIH3T3 cells (20 µg)
4. Xenopus eggs (50 µg)

The anti-Centrin 1 antibody was used at 1/1,000 Dilution. Molecular mass is 19.6 kDa

Distributed by AS ONE International, Inc.



**Fig.2. Immunofluorescence staining of centrin-1 protein in HeLa cells with anti-Centrin 1 antibody.** Growing HeLa cells were fixed with 4% paraformaldehyde, and permeabilized with 0.25% Triton X-100. Anti-Centrin 1 antibody was used at 1/100 dilution. As 2<sup>nd</sup> antibody, goat anti-rabbit IgG conjugated with Alex 488 (red) at 1/1,000 dilution. DNA was stained with DAPI (blue).