

## Anti-U1 snRNP C (U1C) antibody, rat monoclonal (4H12)

# 70-400                      100 µg

The spliceosomal U1C protein is critical to the initiation and regulation of precursor messenger RNA (pre-mRNA) splicing, as part of the U1 small nuclear ribonucleoprotein particle (snRNP). U1C is needed for efficient complex formation of U1 snRNP with a 5' splice site. The antibody was produced from the hybridoma cultured in serum-free medium and purified under mild conditions by propriety chromatography processes.

### Applications

1. Western blot
  2. Immunocytochemistry
  3. Immunohistochemistry (frozen section)
  4. ELISA
- Other applications have not been tested.

### Specifications

Immunogen: Recombinant GST-fused mouse U1C full length

Isotype: Rat IgG 2a kappa

Form: Purified monoclonal antibody (IgG) 1mg/ml in PBS, 50% glycerol, filter-sterilized

Specificity: Specific to human, simian, and mouse U1C. Other species have not been tested.

Storage: -20°C, for long term storage -70°C

**Data Link** UniProtKB/Swiss-Prot [Q62241](#) (RU1C\_MOUSE)

### References

1. Muto Y *et al* "The structure and biochemical properties of the human spliceosomal protein U1C" *J Mol Biol* 341: 185–198 (2004) PMID: [15312772](#)
2. Pomeranz Krummel DA *et al* "Crystal structure of human spliceosomal U1 snRNP at 5.5Å resolution" *Nature* 458: 475-480 (2009) PMID: [19325628](#)

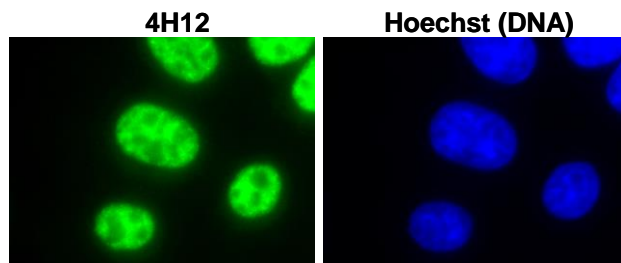


Fig.1 Immunofluorescent staining of L929 (mouse) cells with antibody 4H12.

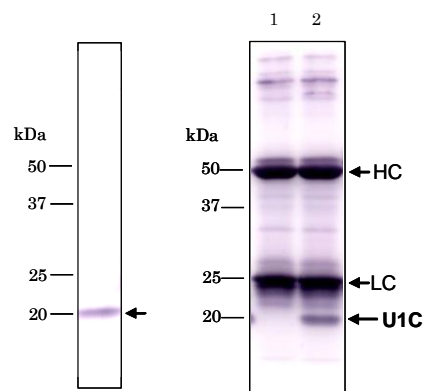


Fig.2 Detection of U1C protein in HeLa total cell extract by Western blotting with antibody 4H12

Fig.3 Immunoprecipitation of U1C protein with 4H12. lane1: no extract lane2: HeLa total extract HC, LC ; IgG heavy & light chain