

Anti-RanBP2 (human) antibody, rabbit serum

Catalog # 71-003 100 µl

RanBP2 interacts with the small GTP-binding protein Ran and forms a large multiprotein complex involved in many biological processes such as mRNA processing, nuclear transport, cell cycle control and postmitotic nuclear reassembly. The protein is identified by western blotting as an apparent molecular mass of 360 kD (see below). It is involved in nucleation of microtubule and control of cell growth by interacting with many protein factors.

Applications

1. Western blotting (~x 1,000 dilution)
2. Immunoprecipitation
3. Indirect immunostaining of RanBP2 in cell

Specifications

Immunogen: synthetic peptide of 3 repeats sequences of RanBP2:
SKAPKSGFEGMFTKKE

Reactivity: human, mouse and rat. Not tested for other species

Form: Undiluted antiserum with 0.09% sodium azide

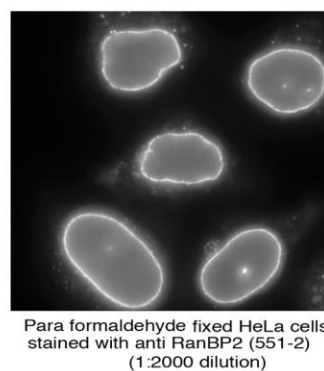
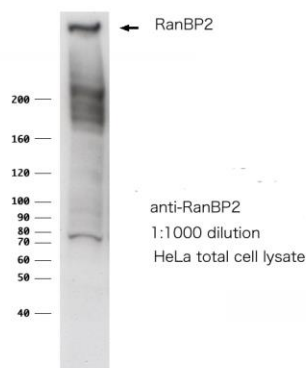
Storage: Ship 4°C and upon arrival aliquot and store at -20°C

Data Link

UniProtKB/Swiss-Prot P49792 (RBP2_HUMAN)

References: This product has been used for the following reference

1. Yokoyama N et al. Nature 376;184 (1955)



Distributed by AS ONE International, Inc.