

Anti-RBP2/JARID1A antibody, mouse monoclonal (9A6)

Catalog # 71-175 100 µg

RBP2 was originally identified as a retinoblastoma binding protein. It is also known as JARID1A (Jumonji, AT rich interactive domain 1A). RBP2 plays both negative and positive roles in RB-mediated transcriptional activation, depending on the kinds of genes and regulates differentiation by its function as an H3K4 histone demethylase (1, 2 & 3).

Applications

Western blot ~1 µg/ml

Other applications were not tested.

Specification

Immunogen: A synthetic peptide corresponding to human RBP2, amino acids 1416-1434.

Isotype: Mouse IgG2a kappa

Form: Purified monoclonal antibody (IgG) 1mg/ml in PBS, 50% glycerol, filter-sterilized

Specificity: Specific to human and mouse RBP2. Can detect endogenous levels of RBP2.

Storage: -20°C, for long term storage -70°C

Data Link: UniProtKB/Swiss-Prot [P29375](#) (KDM5A_HUMAN)

References

1. Lopez-Bigas N *et al* "Genome-wide analysis of the H3K4 histone demethylase RBP2 reveals a transcriptional program controlling differentiation" *Mol Cell* 31: 520-530 (2008) PMID: [18722178](#)
2. Klose RJ *et al* "The retinoblastoma binding protein BRP2 is an H3K4 demethylase" *Cell* 128: 889-900 (2007) PMID: [17320163](#)
3. Christensen J *et al* "RBP2 belongs to a family of demethylases, specific for tri- and dimethylated lysine 4 on histone 3" *Cell* 128:1063-1076 (2007) PMID: [17320161](#)

Figure: Identification of RBP2 in crude cell extracts by Western blot with antibody 9A6.

Lane 1. HeLa control siRNA

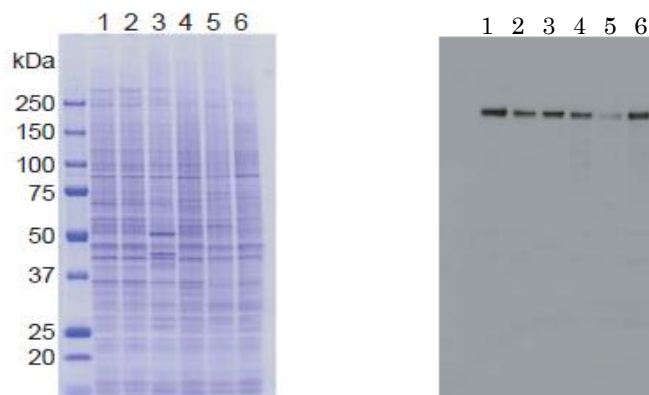
Lane 2. HeLa RBP2 siRNA

Lane 3. MCF7

Lane 4. U2OS

Lane 5. NIH3T3

Lane 6. J1 (mouse ES)



A. SDS-PAGE with CBB staining

B. Western blot (detection: ECL)

Distributed by AS ONE International, Inc.