

Anti- SLC2A3 / GLUT3 antibody, rat monoclonal (#10)

Catalog # 74-200 100 µg

SLC2A3 is a facilitative glucose transporter and probably a neuronal glucose transporter. SLC2A3 abundant in sperm tail has a molecular mass of 53,479 Da with 493 amino acids.

Applications

Western blot 1/200~1/500 dilution

Not tested in other applications

Specification

Immunogen: Mouse sperm

Reactivity: Mouse SLC2A3. Not tested in other species.

Form: Purified monoclonal antibody (IgG) 1mg/ml in PBS, 50% glycerol, filter-sterilized. Azide- and carrier-free.

Isotype: Rat IgG

Storage: Shipped at 4°C. Upon arrival, spin-down and store at -20°C.

Data Link

UniProtKB P32037 (GTR3_MOUSE)

Reference:

This antibody was described in and used in the following publications.

Fujihara Y. et al. Expression of TEX101, regulated by ACE, is essential for the production of fertile mouse spermatozoa. Proc Natl Acad Sci USA. 2013 May 14; 110(20):8111-6. doi:

10.1073/pnas.1222166110. WB

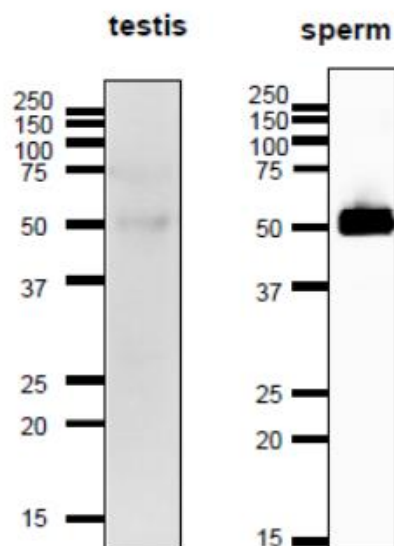


Fig. 1 Identification of SLC2A3 protein in lysates of mouse testis and sperm by Western blot with anti-SLC2A3 antibody. The antibody (clone #10) was used at 1/500 dilution and 2nd antibody HRP-conjugated anti-rat IgG antibody was used at 1/10,000 dilution. SLC2A3 is abundantly expressed in sperm.