

Anti- PCNA (*S. cerevisiae*) antibody, rabbit polyclonal, CHIP grade

62-160 100 μ g

Storage: Shipped at 4°C and store at -20°C (avoid freezing by storing below -25°C)

Reactivity: *Saccharomyces cerevisiae*

Immunogen: Recombinant full-size PCNA (*S. cerevisiae*, 1-258 aa)

Applications:

1. Western blotting (1/1,000 dilution)
2. Immuno-precipitation (1/100)
3. Chromatin Immuno-Precipitation (Assay dependent)

Form: Protein-A affinity purified IgG, 2 mg/ml in PBS, 50% glycerol. Filter sterilized.
No preservative nor carrier protein added.

Background: This protein is an auxiliary protein of DNA polymerase delta and is involved in the control of eukaryotic DNA replication by increasing the polymerase's processibility during elongation of the leading strand. Involved in DNA repair and recombination. It consists of 258 amino acids with MW of 28,916

Data Link: UniProt [P15873](#) (PCNA_YEAST)

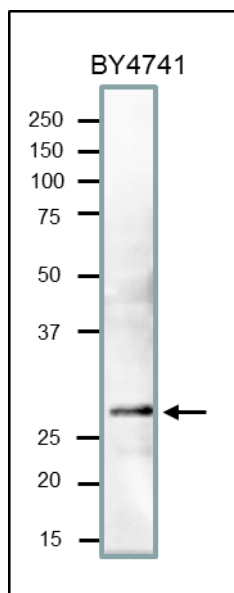


Fig.1 Western Blot of PCNA in crude extract of *S. cerevisiae*

The antibody was used at 1/1,000 dilution. Molecular mass of PCNA is 29 kDa. Crude extract of *S. cerevisiae* strain BY4741 (20 μ g) applied.

Related product: [#10-151](#) PCNA protein (human), functional
[#70-080](#) Anti-PCNA antibody, rabbit polyclonal (Reacts with mammals, chicken, xenopus)