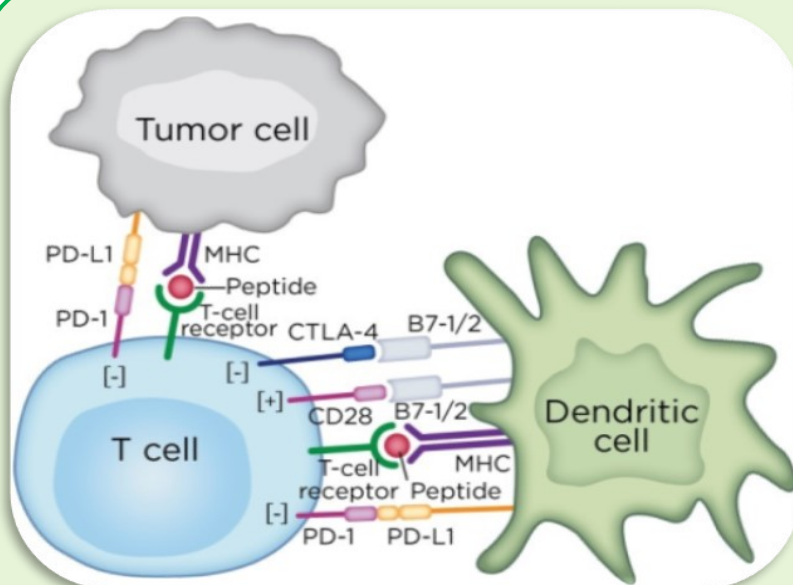
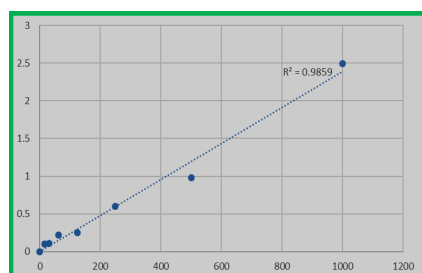


IMMUNE CHECKPOINT *ELISA*

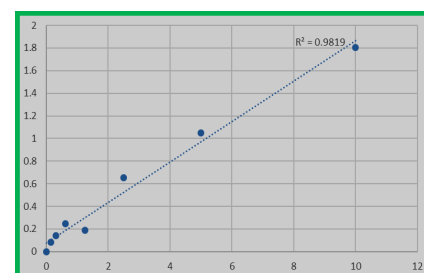


Cancer cells hijack certain immune-checkpoint pathways as a major mechanism of immune resistance. Regulations of many immune checkpoints are initiated by ligand-receptor interactions. Inhibition of negative regulatory checkpoints such as CTLA-4 and PD-1, resulting in increased activation of the immune system, has led to effective cancer immunotherapies. We offer both ELISA kits and antibodies of key immune checkpoint targets to evaluate immune responses to checkpoint inhibitors and stimulators.

ELISA Kits	Cat. No.	Detection Range	LOD
Inhibitory Target			
Human Killer cell immunoglobulin-like receptor 2DS4 (KIR2DS4)	KTE61915	1.56 - 100 ng/mL	0.66 ng/mL
Human Programmed Death 1 (PD-1)	KTE61280	15.6 - 1000 pg/mL	3.9 pg/mL
Mouse Programmed Death 1 (PD-1)	KTE70783	0.312 - 20 ng/mL	0.078 ng/mL
Human Programmed cell death 1 ligand 2 (PDCD1LG2)	KTE61279	0.156 - 10 ng/mL	0.061 ng/mL
Human V-set domain-containing T-cell activation inhibitor 1 (VTCN1)	KTE60044	0.156 - 10 ng/mL	0.058 ng/mL
Human T cell immunoreceptor with Ig and ITIM domains (TIGIT)	KTE62327	0.312 - 20 ng/mL	0.133 ng/mL
Stimulatory Target			
Human Soluble OX40L (sOX40L)	KTE60202	0.156 - 10 ng/mL	0.039 ng/mL
Human CD40 receptor/soluble (CD40)	KTE62285	15.6 - 1000 pg/mL	5.8 pg/mL

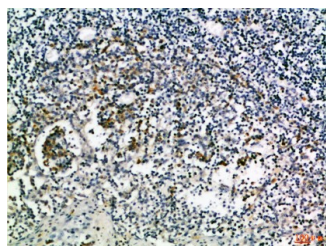


Standard curve for human PD-1 ELISA

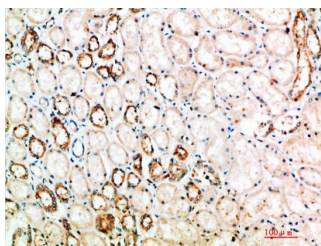


Standard curve for human PD-L2 ELISA

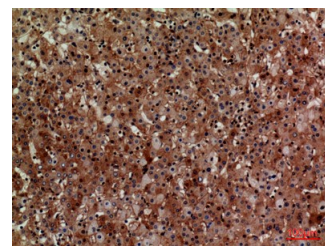
IMMUNE CHECKPOINT ANTIBODIES



IHC for human tonsil tissue with
PD-L1 Ab (ABP58053)

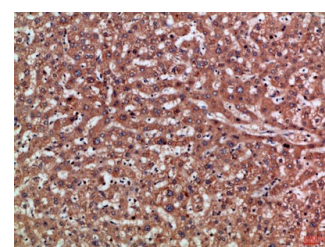


IHC for human kidney tissue with
CTLA-4 Ab (ABP58036)

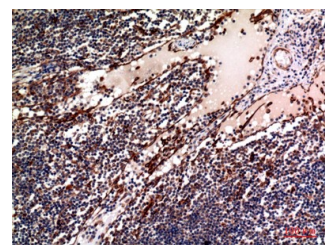


IHC for human liver tissue and WB for
293 cells with **B7-H3** Ab (ABP53016)

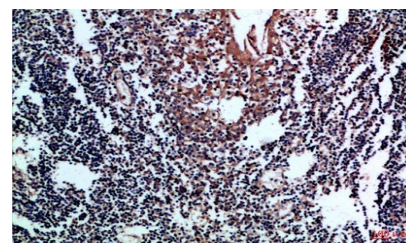
Inhibitory Target	Cat. No.	Reactivity	Apps
B7-H3 (CD276)	ABP53016	H, M, R	ELISA, IHC, WB
CTLA-4 (CD152)	ABP58036	H	ELISA, IHC
PD-L1 (CD274)	ABP58053	H	ELISA, IHC
PD-L2 (CD273)	ABP59870	H	ELISA, IHC, WB
TIM-3 (HAVR2)	ABP58749	H, M	ELISA, WB
Stimulatory Target	Cat. No.	Reactivity	Apps
B7-1 (CD80)	ABP58074	H	ELISA, IHC
B7-H2 (CD275, ICOS Ligand)	ABP58054	H	ELISA, IHC
CD28	ABP52975	H	ELISA, WB
CD40 (5C3)	72-030	H	FC, IHC, IF, ICC, WB
CD40 (5C3), Biotin Conjugated	72-031	H	FC, IHC
CD40 (5C3) FITC Conjugated	72-032	H	FC, IHC, IF
CD137 (aa 70-150)	ABP54902	H	ELISA, IF, WB
CD137 (aa 111-160)	ABP58034	H	ELISA, IHC
CD137L	ABP50895	H	ELISA, IF, WB
ICOS (CD278)	ABP57399	H, M, R	ELISA, IHC, WB
Ox40	ABP53338	H	ELISA, WB
Ox40L	ABP53351	H	ELISA, IHC, WB



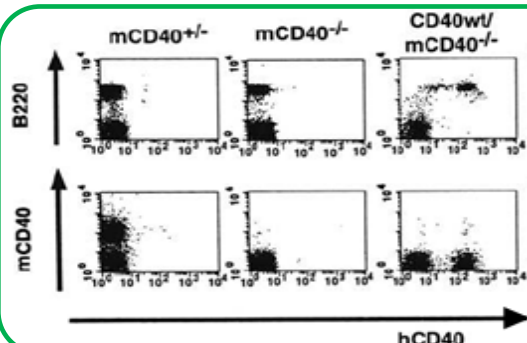
IHC for human liver tissue and WB for
HeLa cells with **PD-L2** Ab (ABP59870)



IHC for human lymph tissue and WB for
KB cells with **Ox40L** Ab (ABP53351)



IHC for human tonsil tissue with
CD80 Ab (ABP58074)



FC analysis of human CD40 in transgenic mouse. Splenocytes from mouse CD40^{+/+}, mCD40^{-/-} and hCD40 wild type/ mCD40^{-/-} mice were stained with antibodies against mCD40, B220 and hCD40 (5C3) (#72-030). hCD40 were expressed specifically on B220⁺ B cells.