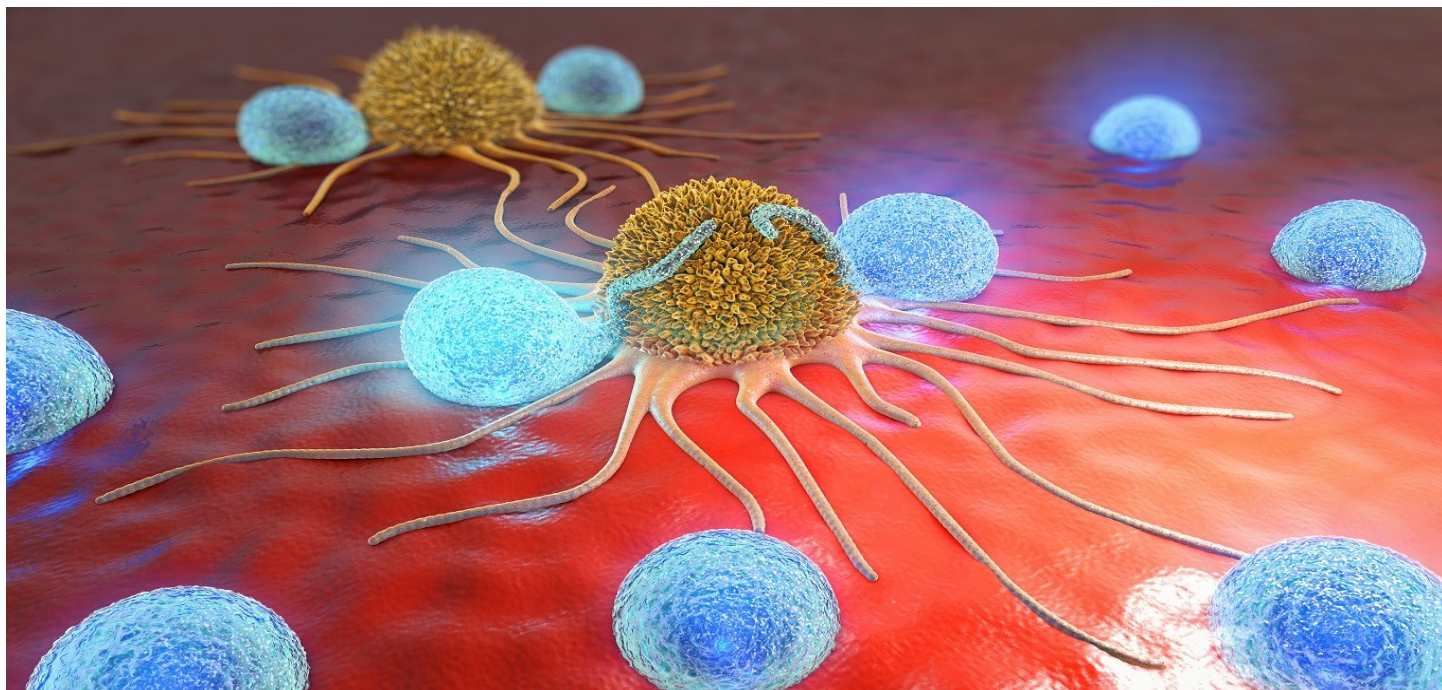


Advancing Cancer Immunotherapy with Immunoassays for Immune Checkpoints



Immuno-Oncology therapies seek to activate the body's natural immune response to fight cancer. Fundamentally different from other cancer treatment approaches, the strategy has proven success but also brings unique considerations and distinctive characteristics that continue to be researched. While cancer cells hijack certain immune-checkpoint pathways as a major mechanism of immune resistance, inhibition of negative regulatory checkpoints such as PD-1, PD-L1 and CTLA-4, resulting in increased activation of the immune system, has led to effective cancer immunotherapies. AS ONE International offers a variety of immunoassay kits and antibodies of key immune checkpoint targets including those emerging ones such as TIM3, LAG3 and TIGIT to evaluate immune responses to checkpoint inhibitors and stimulators.

IHC Antibodies

Antibody Target	Pack Size	Cat. No.	Antibody Target	Pack Size	Cat. No.
PD-1	0.1 ml	AO0010100MP	TIM3	0.1 ml	AO0030100MP
	1.0 ml	AO0011000MP		1.0 ml	AO0031000MP
PD-L1	0.1 ml	AO4110100MP	TIGIT	0.1 ml	AO2690100MP
	1.0 ml	AO4111000MP		1.0 ml	AO2691000MP
CTLA-4	0.1 ml	AO0040100MP	LAG3	0.1 ml	AO1030100MP
	1.0 ml	AO0041000MP		1.0 ml	AO1031000MP

Designations

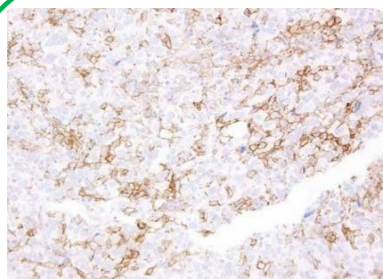
IVD:



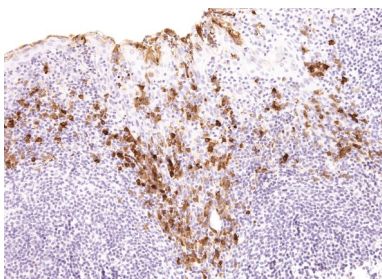
RUO:



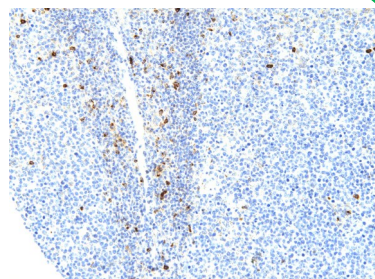
AS ONE INTERNATIONAL, INC.



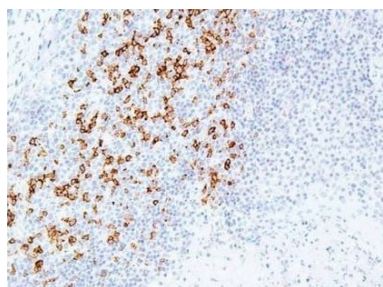
IHC for human lung tissue with **PD-L1** Ab (AO4110100MP)



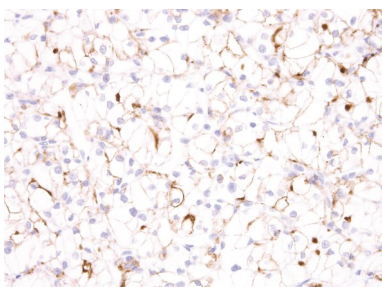
IHC for human tonsil tissue with **CTLA-4** Ab (AO0040100MP)



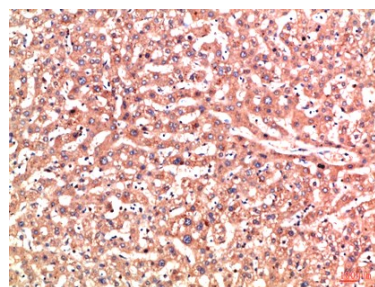
IHC for human tonsil tissue with **LAG3** Ab (AO1030100MP)



IHC for human tonsil tissue with **PD-1** Ab (AO0010100MP)



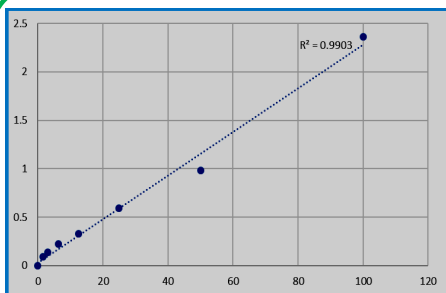
IHC for human kidney tissue with **TIM3** Ab (AO0030100MP)



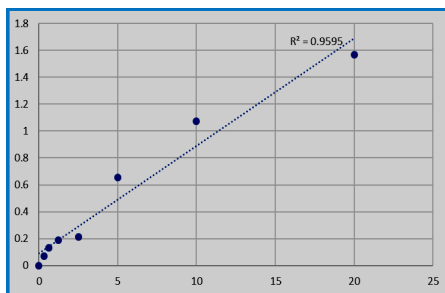
IHC for human liver tissue with **PD-L2** Ab (ABP59870)

ELISA Kits

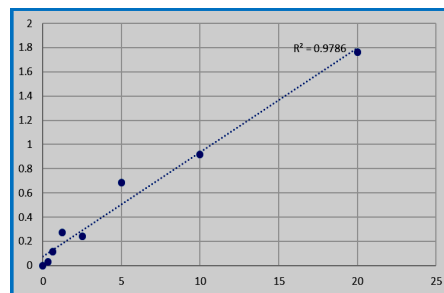
ELISA Kits	Cat. No.	Detection Range	LOD
Human Killer cell immunoglobulin-like receptor 2DS4 (KIR2DS4)	KTE61915	1.56 - 100 ng/mL	0.66 ng/mL
Human Programmed Death 1 (PD-1)	KTE61280	15.6 - 1000 pg/mL	3.9 pg/mL
Mouse Programmed Death 1 (PD-1)	KTE70783	0.312 - 20 ng/mL	0.078 ng/mL
Human Programmed cell death 1 ligand 2 (PDCD1LG2)	KTE61279	0.156 - 10 ng/mL	0.061 ng/mL
Human V-set domain-containing T-cell activation inhibitor 1 (VTCN1)	KTE60044	0.156 - 10 ng/mL	0.058 ng/mL
Human T cell immunoreceptor with Ig and ITIM domains (TIGIT)	KTE62327	0.312 - 20 ng/mL	0.133 ng/mL
Human Soluble OX40L (sOX40L)	KTE60202	0.156 - 10 ng/mL	0.039 ng/mL
Human CD40 receptor/soluble (CD40)	KTE62285	15.6 - 1000 pg/mL	5.8 pg/mL



ELISA for human killer cell immunoglobulin-like receptor 2DS4 (KIR2DS4) (KTE61915)



ELISA for mouse programmed death 1 (PD-1) (KTE70783)



ELISA for human T cell immunoreceptor with Ig and ITIM domains (TIGIT) (KTE62327)